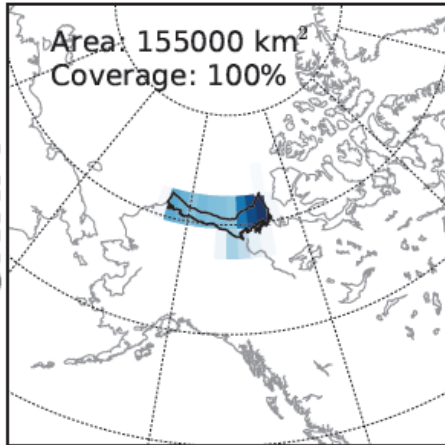
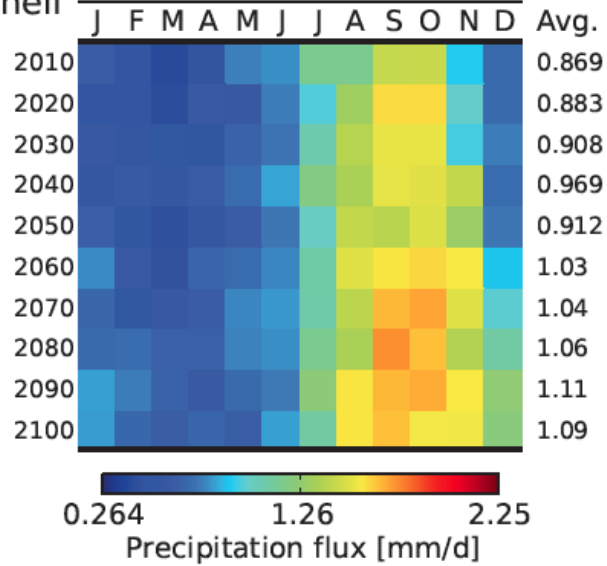


Arctic Sea - continental coast and shelf

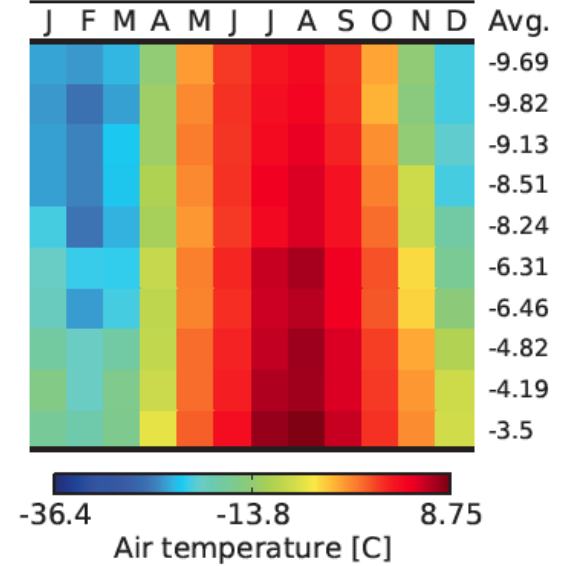
CNRM



Precipitation

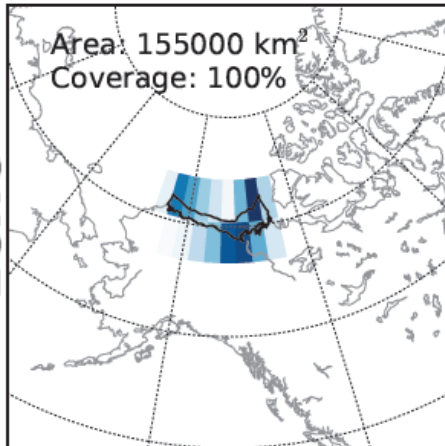


Surface air temperature

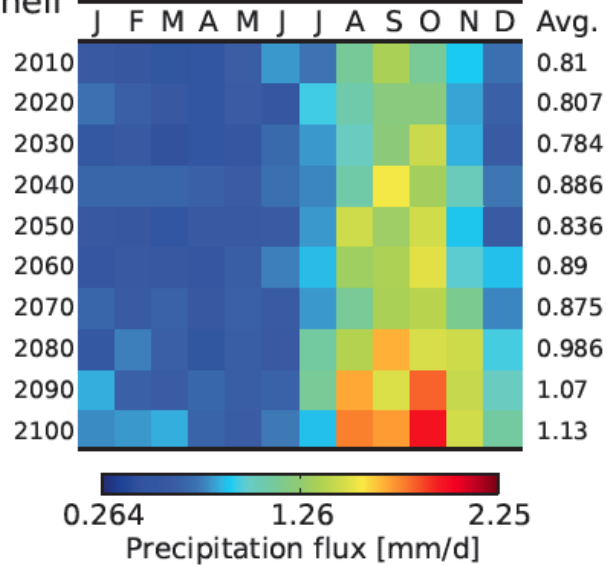


Arctic Sea - continental coast and shelf

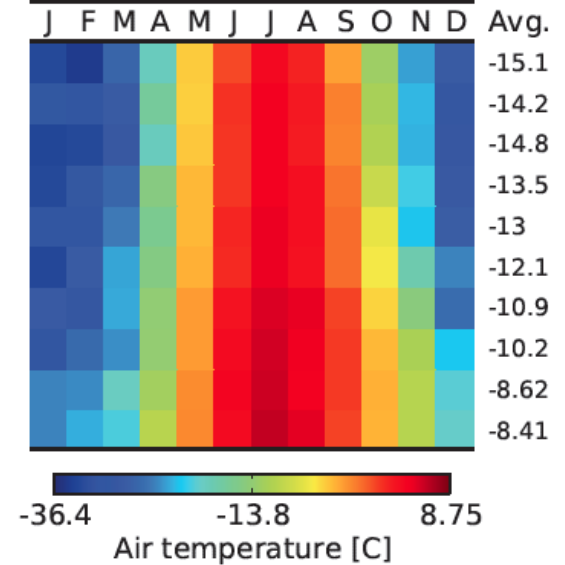
ECHO



Precipitation

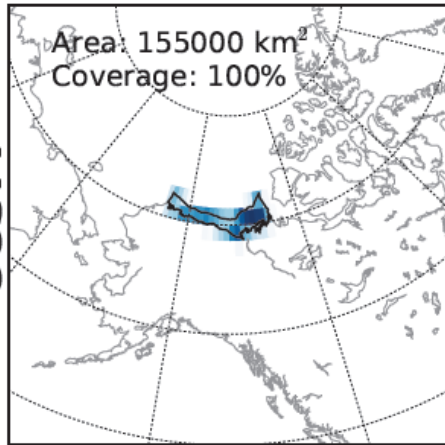


Surface air temperature

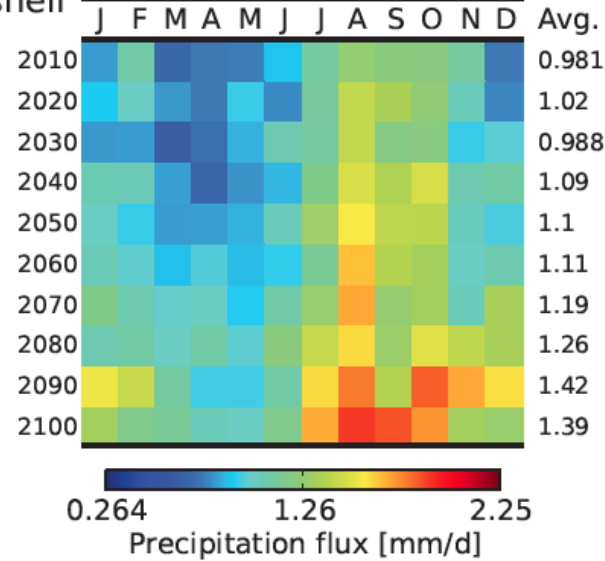


aufort Sea - continental coast and shelf

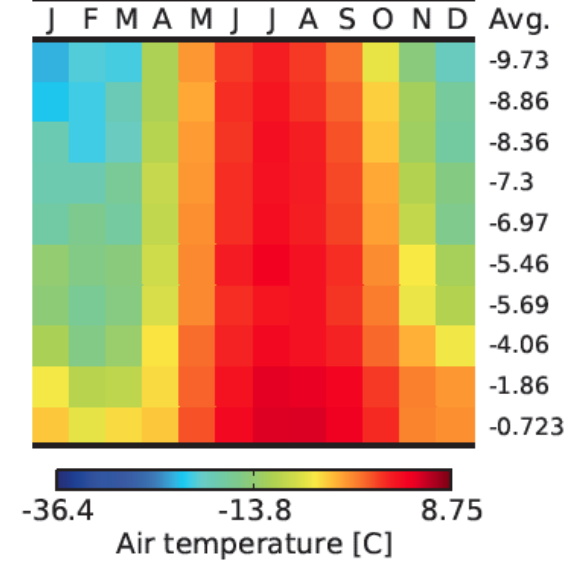
CCSM



Precipitation flux

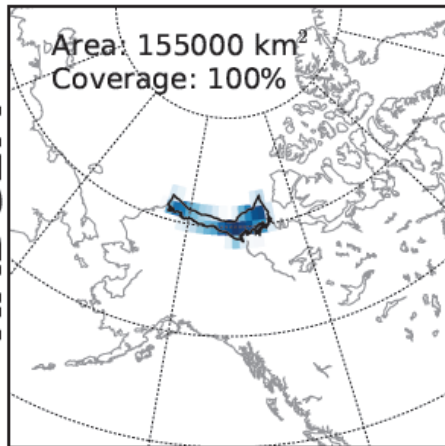


Air temperature

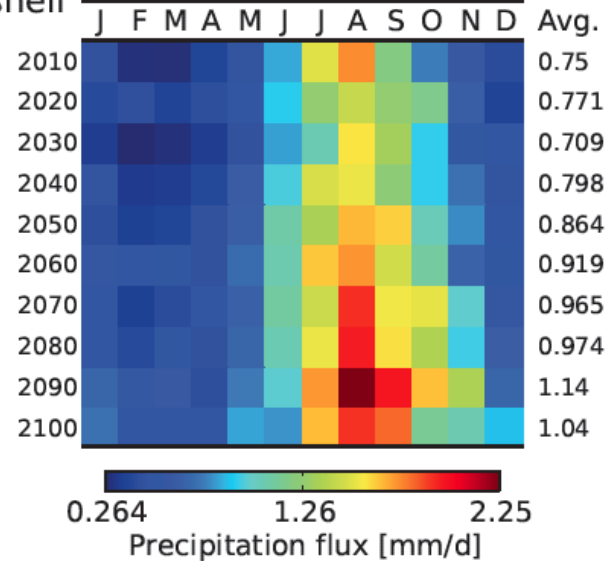


aufort Sea - continental coast and shelf

HADGEM



Precipitation



Surface air temperature

