



United Nations  
Convention to Combat  
Desertification



United Nations  
Climate Change



Convention on  
Biological Diversity



WWF

**giz**

Deutsche Gesellschaft  
für Internationale  
Zusammenarbeit (GIZ) GmbH



**ILRI**



# One Land, One Vision: Integrating Rangeland and Pastoralist Solutions into Global Environmental Frameworks

March 31st, 14:00 – 15:30 (CET)



# AGENDA - One Land, One Vision: Integrating Rangeland and Pastoralist Solutions into Global Environmental Frameworks

## 1. Opening Remarks

**Claudia Hiepe**, Senior Policy Officer at the Federal Ministry for Economic Cooperation and Development (BMZ)

## 2. Scene Setting

**Xenya Scanlon**, Chief of Communications, External Relations and Partnerships, UNCCD

## 3. Bridging the Conventions Panel

**Alejandro Kilpatrick**, Manager, Capacity-Building Sub-division, Means of Implementation, UNFCCC

**Tristan Tyrrell**, Programme Management Officer for Biodiversity, Climate Change and Dry & Subhumid Lands, CBD

**Feras Ziadat**, Land and Water Officer, Land Resources Management and Planning, FAO

## 4. Reflections from Practice

**Natasha Maru**, Thematic Expert on Rangelands and Pastoralism, International Land Coalition

**Martina Fleckenstein**, Director of Policy, Food and Agriculture Practice, WWF International

## 5. Discussion and Q&A

## 6. Wrap-up and Next Steps

**Sairandhri Lapalikar**, Programme Officer, IUCN Forest and Grasslands Team





RESTORING LAND  
RESTORING HOPE



**United Nations**  
Convention to Combat  
Desertification

# Webinar: One Land, One Vision: Integrating Rangeland and Pastoralist Solutions into Global Environmental Frameworks

## 31 March 2026

**XENYA SCANLON**  
Chief of Communications, External Relations and Partnerships, UNCCD



RESTORING LAND  
RESTORING HOPE



UP TO **40%** OF LAND IS DEGRADED



HARMING LIVELIHOODS,  
BIODIVERSITY AND CLIMATE



# 50%

OF THE  
EARTH'S  
SURFACE IS  
RANGELAND



HALF OF THAT  
PORTION IS  
DEGRADED



RESTORING LAND  
RESTORING HOPE

RESTORING **150M** HA OF DEGRADED LAND

(An area the size of Mongolia)



COULD INCREASE FOOD SECURITY  
FOR 200 MILLION PEOPLE

RESTORING LAND  
RESTORING HOPE



# LAND IS AT THE HEART OF GLOBAL SOLUTIONS





# GLOBAL LAND OUTLOOK

## Thematic Report on Rangelands and Pastoralists

### KEY MESSAGES

- ❖ The conversion and loss of rangelands is done in silence and attracts little public attention.
- ❖ Pastoralist livelihoods and cultures around the world are under threat from shortsighted policies, weak governance, and economic incentives that undermine their production systems.



# GLOBAL LAND OUTLOOK

## Thematic Report on Rangelands and Pastoralists

### KEY MESSAGES

- ❖ Rangelands operate as complex social-ecological systems with critical values, processes, goods, and services.
- ❖ Despite the extraordinary diversity and intrinsic value of rangelands and pastoralist systems, they rarely feature in global policy discussions or national development priorities.



# GLOBAL LAND OUTLOOK

## Thematic Report on Rangelands and Pastoralists

### KEY MESSAGES

- ❖ Pastoralism and extensive livestock production systems are deeply rooted in the rangelands and often the most effective means to protect, sustainably manage, and restore rangelands.
- ❖ Greater political attention and informed investments are urgently needed to safeguard and improve the health and productivity of the rangelands and their inhabitants.

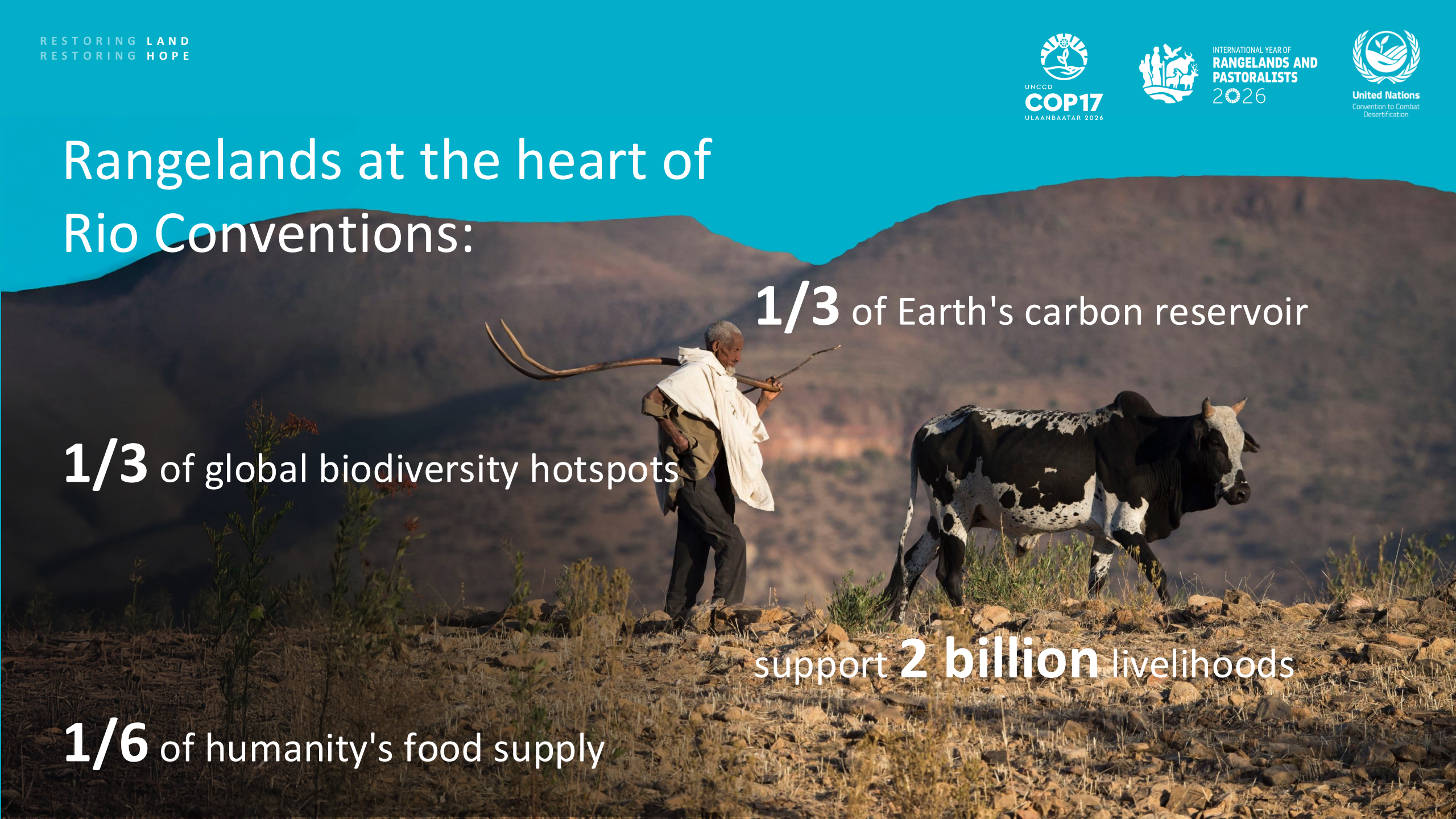
# Rangelands at the heart of Rio Conventions:

**1/3** of Earth's carbon reservoir

**1/3** of global biodiversity hotspots

support **2 billion** livelihoods

**1/6** of humanity's food supply



# UNCCD decision 29/COP.16 Rangelands and Pastoralists invites Parties to:

prioritize policies and investments for the sustainable management of rangelands, recognizing their essential role in addressing key challenges related to food insecurity, desertification, land degradation and drought, biodiversity loss and climate change



Investing in rangelands can generate returns of up to US \$35 for every US \$1, thanks to the combined ecological and socio-economic benefits



RANGELANDS  
RECOGNIZE  
RESPECT  
RESTORE



DESERTIFICATION  
& DROUGHT DAY  
17 JUNE 2026

# Kenya

Host of Desertification  
and Drought Day 2026



RANGELANDS:

**Recognize.  
Respect.  
Restore.**

# DESERTIFICATION AND DROUGHT DAY 2026

- ❖ **Recognize** rangelands' economic contribution to national and regional economies, their role in sustaining biodiversity and wildlife and the multiple benefits they provide, from regulating water cycles to storing carbon
- ❖ **Respect** pastoralists, Indigenous Peoples and local communities, whose mobility, customary governance systems and ecological knowledge are essential to maintaining the health and productivity of these landscapes
- ❖ **Restore** rangelands by investing in sustainable land and water management, strengthening governance, improving drought preparedness and supporting community-led restoration efforts



United Nations  
Convention to Combat  
Desertification

RANGELANDS  
RECOGNIZE  
RESPECT  
RESTORE



DESERTIFICATION  
& DROUGHT DAY  
17 JUNE 2026



MINISTRY OF  
ENVIRONMENT,  
CLIMATE CHANGE  
AND FORESTRY  
REPUBLIC OF KENYA



UNCCD  
**COP17**  
ULAANBAATAR 2026

RESTORING LAND  
RESTORING HOPE



**United Nations**  
Convention to Combat  
Desertification

**UNCCD COP17**

**17-28 AUGUST 2026**

**ULAANBAATAR, MONGOLIA**





UNCCD  
**COP17**  
ULAANBAATAR 2026

# RESTORING LAND RESTORING HOPE

RESTORING LAND  
RESTORING LIFE

RESTORING LAND  
RESTORING CLIMATE

RESTORING LAND  
RESTORING HEALTH

RESTORING LAND  
RESTORING ECONOMIES

RESTORING LAND  
RESTORING WATER

RESTORING LAND  
RESTORING CULTURE



RESTORING LAND  
RESTORING HOPE



24 August 2026

# FINANCE DAY

---



RESTORING LAND  
RESTORING HOPE



25 August 2026

# WATER DAY

---



RESTORING LAND  
RESTORING HOPE



26 August 2026

# LAND & PEOPLE DAY

---



RESTORING LAND  
RESTORING HOPE



27 August 2026

# FOOD SYSTEMS & SOIL HEALTH DAY

---





**United Nations**  
Convention to Combat  
Desertification



INTERNATIONAL YEAR OF  
**RANGELANDS AND  
PASTORALISTS**  
2026



UNCCD  
**COP17**  
ULAANBAATAR 2026

# Silk Road Journey from Riyadh to Ulaanbaatar

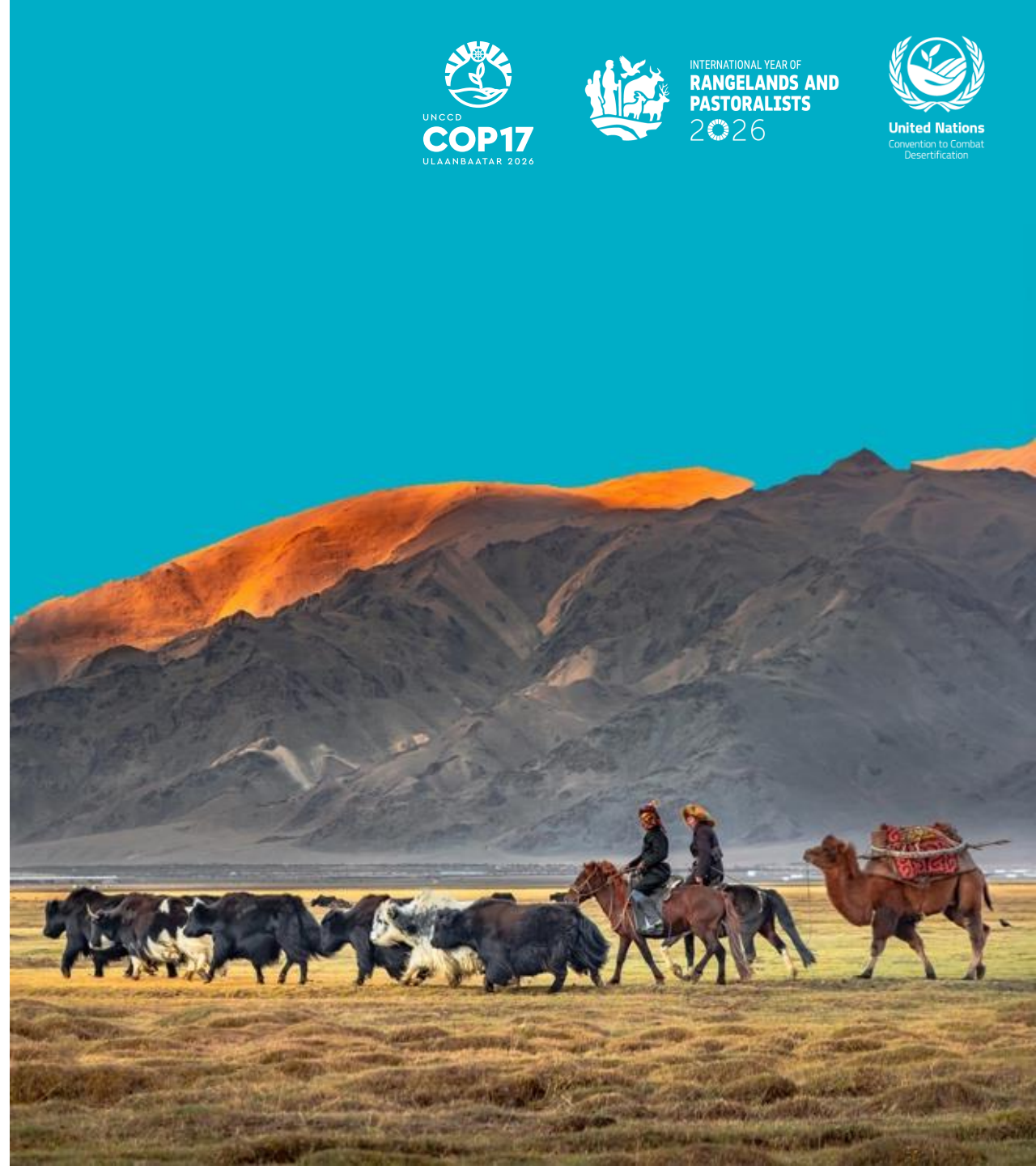
OUTREACH AND ADVOCACY CAMPAIGN FOR THE  
INTERNATIONAL YEAR OF RANGELANDS AND PASTORALISTS

RESTORING LAND  
RESTORING HOPE



# Why This Journey?

- ❖ Symbolic and physical **6,000 km caravan** journey along the fabled Silk Road
- ❖ Celebrate the **International Year of Rangelands and Pastoralists** and build momentum from UNCCD COP16 in Riyadh, Saudi Arabia in Dec 2024 to UNCCD COP17 in Ulaanbaatar, Mongolia from 17-28 Aug 2026
- ❖ **Highlight rangeland ecosystems** and their stewards across numerous nations
- ❖ **Strong visual storytelling**, high visibility and media opportunities along the journey to ensure country ownership and partner engagement





# Objectives

- ❖ Spotlight sustainable rangeland solutions across the journey and around the world
- ❖ Secure investment and political support for rangelands
- ❖ Elevate pastoralist voices—especially women, Indigenous and local leaders
- ❖ Inspire global audiences through vivid, story-led communications

# The Epic Journey

- ❖ Route follows historic Silk Road and includes several former UNCCD COP/CRIC host countries, including: Saudi Arabia, Turkiye, Uzbekistan, China and Mongolia
- ❖ Delegation leaders join final leg of the Silk Road Journey – arrival into Ulaanbaatar during COP17 high-level segment
- ❖ Joint Call to Action urging support for rangelands and pastoralists, building on COP16 decision and setting the stage for Rangelands Flagship Initiative adoption



RESTORING LAND  
RESTORING HOPE



**THANK YOU AND SEE YOU IN ULAANBAATAR!**

More information: <https://www.unccd.int/cop17>





**United Nations Convention to Combat  
Desertification**

P.O. Box 260129  
D-53153 Bonn, Germany

**Office Location**

UNCCD  
Platz der Vereinten Nationen 1  
D-53113 Bonn, Germany

**Switchboard**

Tel: 00 49 228 815 2800  
Email: [secretariat@unccd.int](mailto:secretariat@unccd.int)



**United Nations**  
Convention to Combat  
Desertification



# **One Land, One Vision: Integrating Rangeland and Pastoralist Solutions into Global Environmental Frameworks**

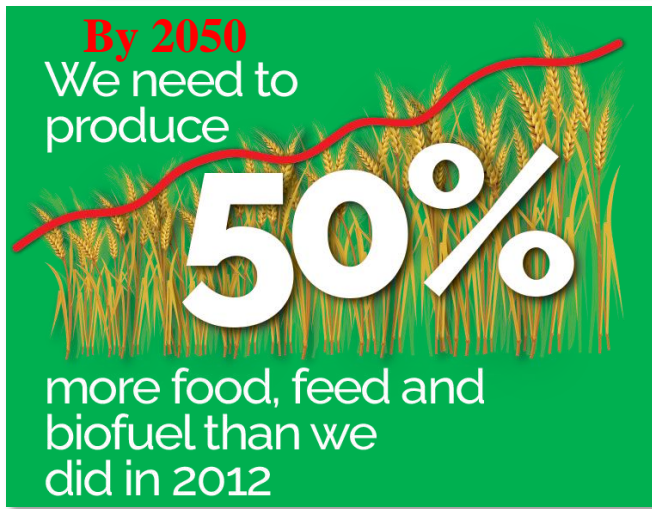
## **Webinar Series on Sustainable Rangelands and Pastoralism**

**Integrated land use planning to strengthen synergies across land, biodiversity and climate action**

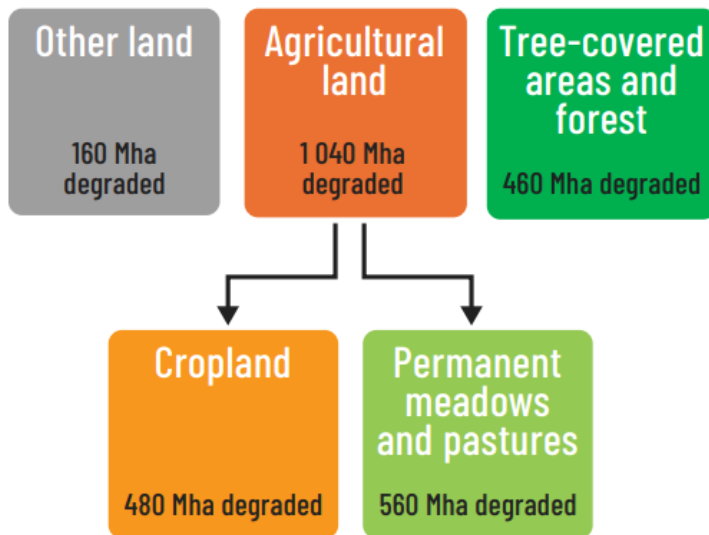
Feras Ziadat  
Land and Water Division - FAO

---

# Restoration of Agricultural Land



**BUT**  
**> 60 %**  
Of Human-Induced Land Degradation occurs in Agricultural Land (cropland and pastureland)



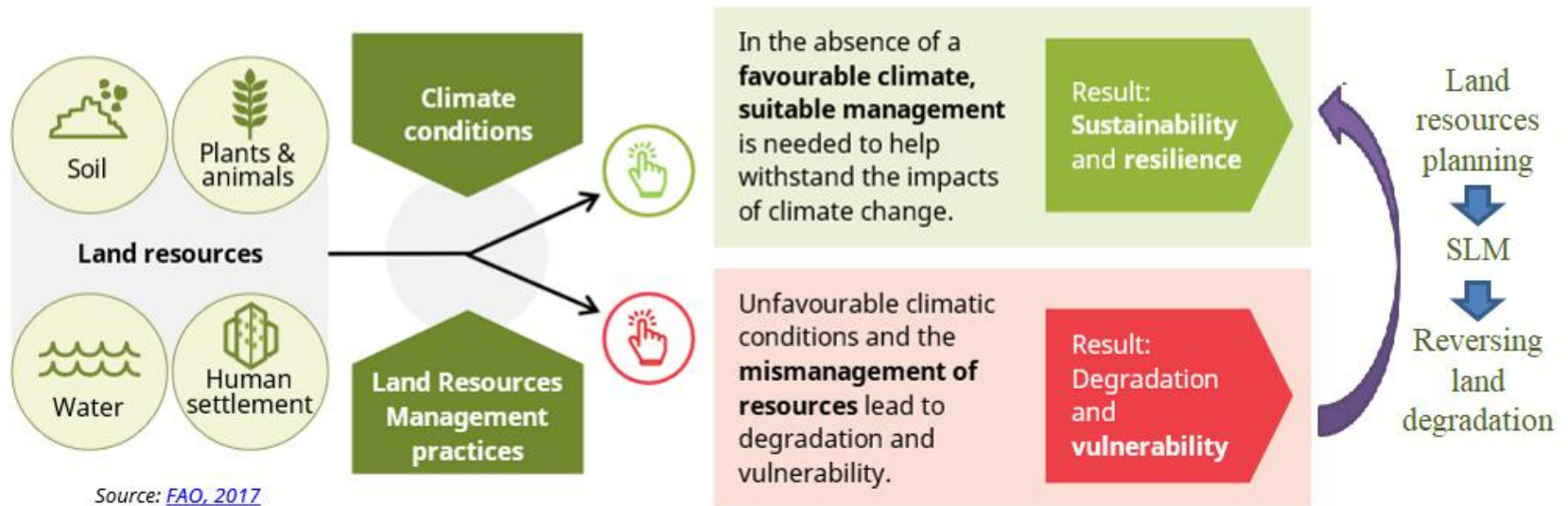
Reducing food production and sustainability

**Without restoration of cropland and pastureland Achieving LDN and Food Security is not possible**

**The role of ILUP?**

## Sustainability and Resilience vs Degradation and Vulnerability

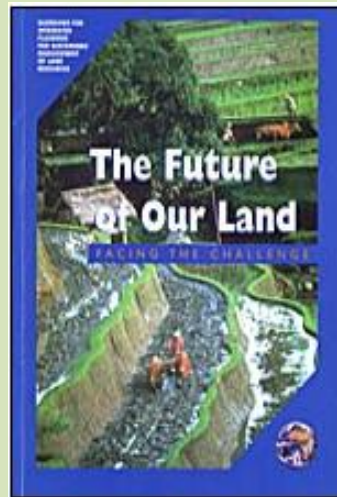
### What is the role of ILUP to reverse the trend?



# Integrated Land Use Planning Guidelines - An Update



1993



1999



2017



2024-2026

- Top-down land use planning
- Integrated land use planning
- Participatory land use planning
- PEOPLE IN PLANNING
- EMERGING ISSUES IN LAND USE PLANNING
  - Climate change
  - Restoration of degraded land, Land Degradation Neutrality and biodiversity
  - Peri-urban and urban agriculture
  - Tenure and land rights of women and indigenous peoples
  - Mainstreaming, upscaling and outscaling land use planning results





## Linkages between different levels in multi-scale land use planning

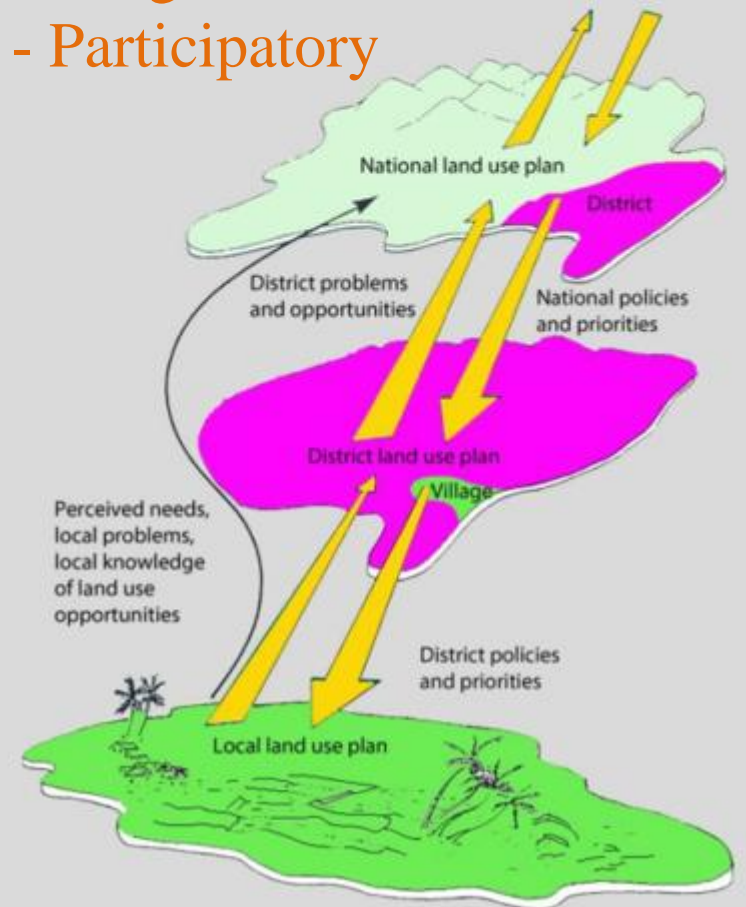


Internationally agreed  
development targets  
(treaties, conventions)



- Multi-sectoral
- Integrated
- Participatory

National development plan



# Step-wise approach in ILUP



	Step 1	Step 2	Step 3	Step 4	Step 5	Step 6	Step 7	Step 8	Step 9
<b>RESPONSIBILITY</b>	Decision-makers	Coordinating entity	Coordinating entity	Task Force	Task Force	Task Force & stakeholders	Task Force	Task Force & implementing agents	Task Force, evaluators, stakeholders
<b>Inputs and Activities for all steps</b>									
<b>LAND-USE PLANNING</b>	INITIATE THE PLANNING PROCESS	IDENTIFY THE STAKEHOLDERS	ESTABLISH A MULTIDISCIPLINARY TASK FORCE	CHARACTERIZE THE LAND, ITS USES AND USERS	ASSESS LAND SUITABILITY, ENVIRONMENTAL, ECONOMIC AND SOCIAL IMPACTS	NEGOTIATE SUITABLE AND ACCEPTABLE LAND USE OPTIONS	PREPARE THE LAND USE PLAN	IMPLEMENT THE LAND USE PLAN	MONITOR, EVALUATE AND REVISE THE LAND USE PLAN
<b>OUTPUTS</b>	Land use issue and planning area identified Problem-solving approach outlined	Inventory of stakeholders, general features, views and concerns Potential project contributors identified	Representative and technically competent Task Force established	Comprehensive technical characterization report	Limited number of optimal development options	Public informed Stakeholder agreement on the plan ('Territorial Pact')	Documented land use action plan	The land use is (being) implemented	Decision to either proceed with implementation, modify or revise the plan

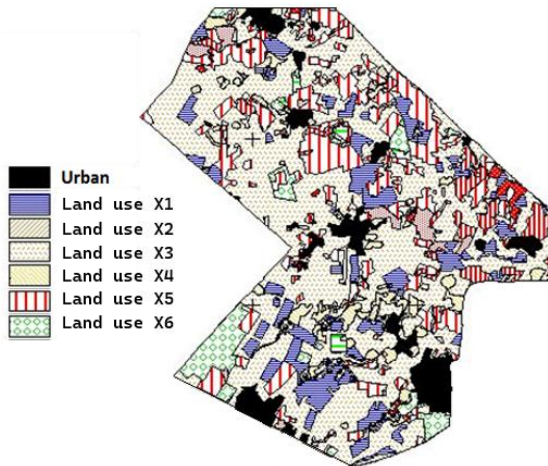


# Suggested Indicators – Step 5

Environmental	Social	Economic	Land Degradation Neutrality	Biodiversity	Climate Change
Agricultural water consumption	Farmer gender distribution	Agricultural GDP	LDN indicators: Soil organic carbon	Kunming–Montreal GBF Indicators	Indicators related to climate change resilience
Water use intensity and efficiency	Farmer age distribution	Cost/benefit analysis	Land productivity	Threatened species	Surface temperature change
Water stress	Poverty rate	Employment	Land cover/use changes	Area of new ecosystem restoration	Gross agricultural greenhouse gas emissions
Forest cover	Access to basic services	Inflation rate	Desertification	Agricultural biodiversity	Land use, land use change, and forestry (LULUCF)
Air quality	Food loss and waste	Trade balance	Wind and water erosion	Spatial planning	Agriculture, forestry and other land uses (AFOLU)
Ecosystems degradation	Indigenous Peoples and communities	Transparent markets and trade	Soil salinization		
	Civic groups engagement	Expenditure on agricultural research	Soil pollution		
	Land use policy	Agricultural infrastructure	Soil quality		
	Stakeholder engagement mechanism				
	Land tenure and ownership				

# Appraisal (ranking) of land use option Goal Achievement Analysis Matrix

**ILUP for enhancing synergies between Rio conventions at national level.**



Criteria	Land use X1	Land use X2	Land use X3	Land use X4	Others .....
<b>Land degradation (LDN) indicators</b> Indicator 1: Indicator 2: etc					
<b>Biodiversity indicators</b> Indicator 1: Indicator 2: etc					
<b>Climate change indicators</b> Indicator 1: Indicator 2: etc					
<b>Environmental indicators</b> Indicator 1: Indicator 2: etc					
<b>Social indicators:</b> Indicator 1: Indicator 2: etc					
<b>Economic Indicators</b> Indicator 1: Indicator 2: etc					
<b>Other indicators</b> Indicator 1: Indicator 2: etc					
<b>Final scoring</b>					



## Sources:

### Guidelines for Land Use Planning (1993)

<https://www.fao.org/3/t0715e/t0715e00.htm>

### Integrated Land Use Planning Guidelines – an update Forthcoming

<https://openknowledge.fao.org/server/api/core/bitstreams/8e2fc4bc-086d-4294-95ba-f69ce18f03e9/content>

### Land resource planning for sustainable land management

Arabic <https://www.fao.org/publications/card/en/c/I5937AR>

English <https://www.fao.org/3/I5937e/I5937e.pdf>

French <https://www.fao.org/publications/card/en/c/I5937FR>

Russian <https://www.fao.org/publications/card/en/c/I5937RU>

### Land Resources Planning Toolbox

<https://www.fao.org/land-water/land/land-governance/land-resources-planning-toolbox/en/>

### The State of the World's Land and Water Resources for Food and Agriculture 2025

<https://www.fao.org/publications/fao-flagship-publications/the-state-of-the-worlds-land-and-water-resources-for-food-and-agriculture/en>

Arabic, Chinese, English, French, Russian, Spanish



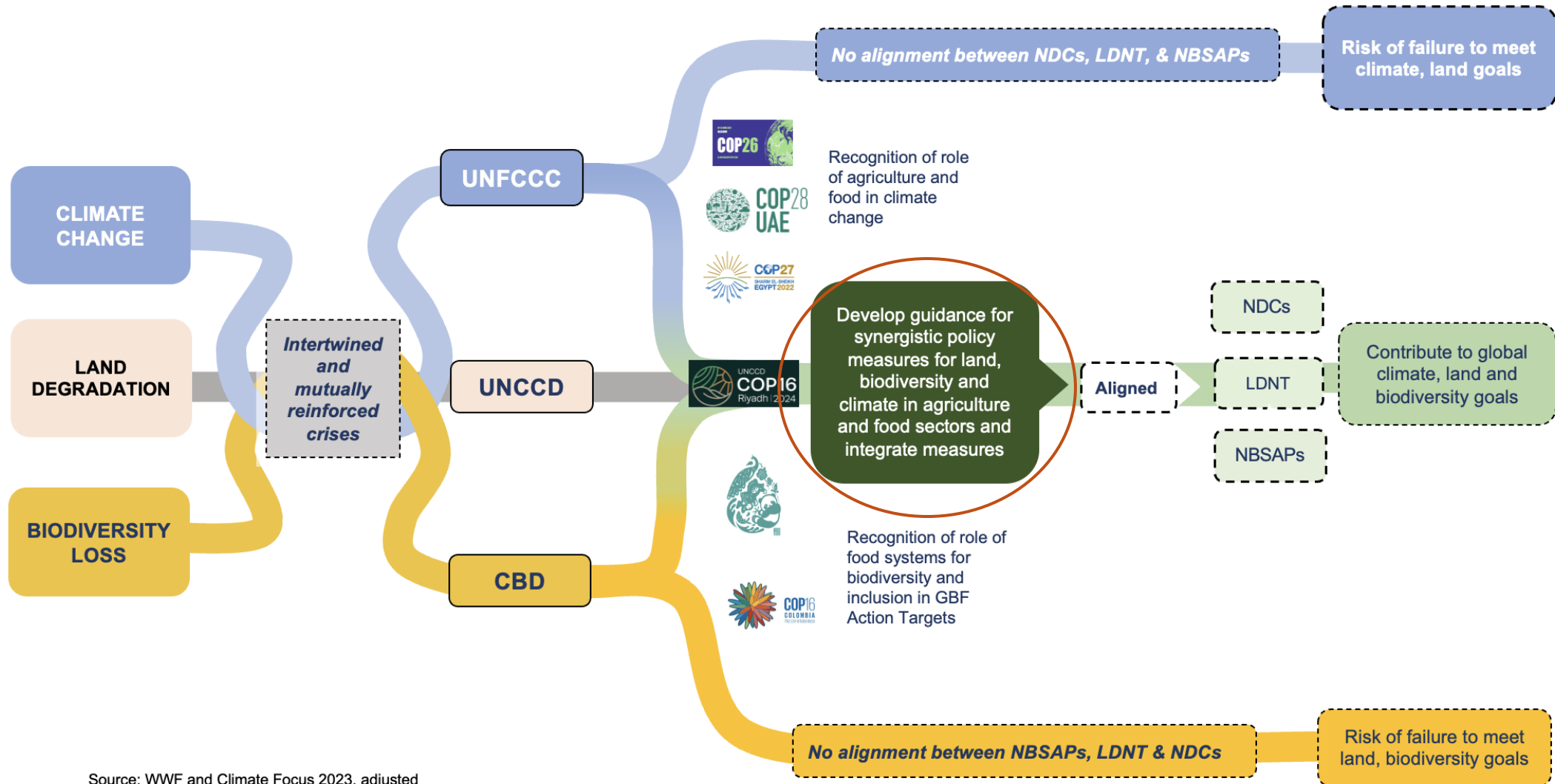
Contact: [feras.ziadat@fao.org](mailto:feras.ziadat@fao.org)



**Policy Tools to  
help streamline  
NDCs and  
NBSAPs at global  
and national  
level**

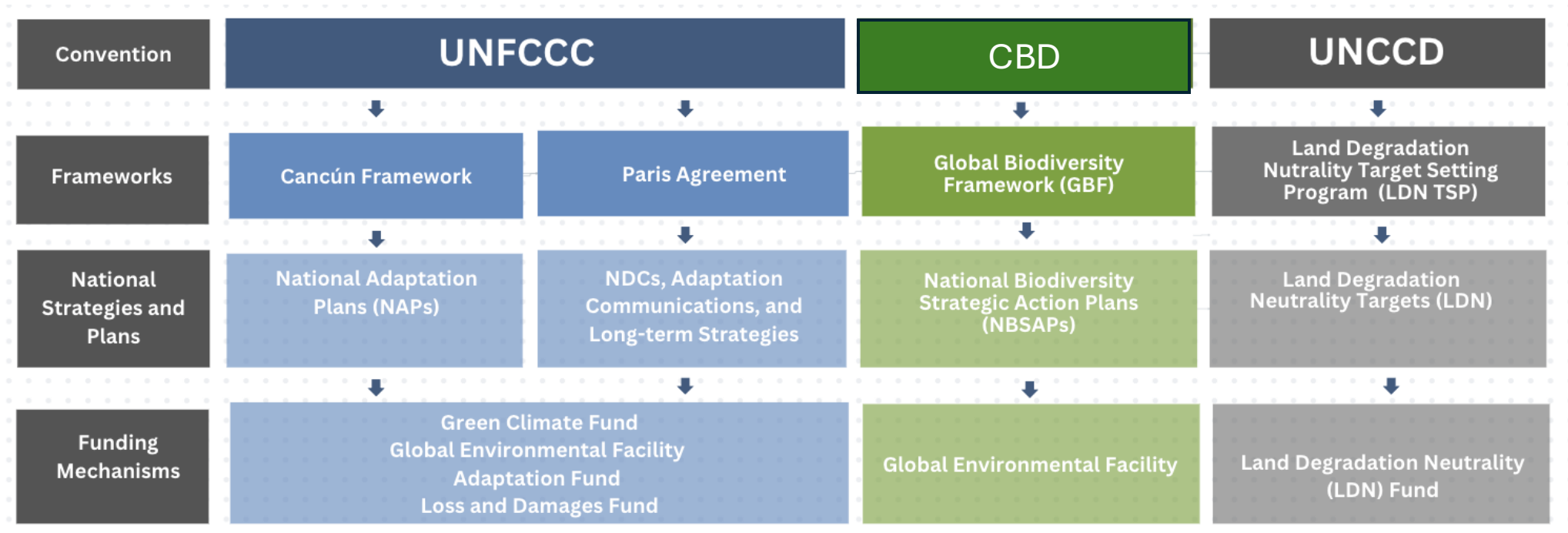
Martina Fleckenstein,  
WWF Food & Agriculture  
Practice

# From silos to synergies in global climate, biodiversity, and land governance

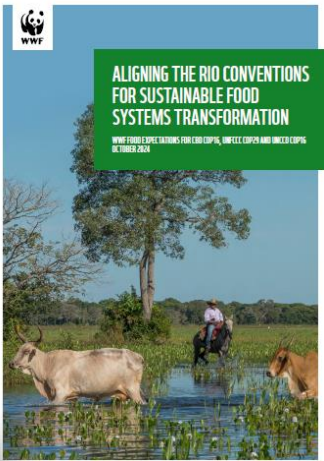
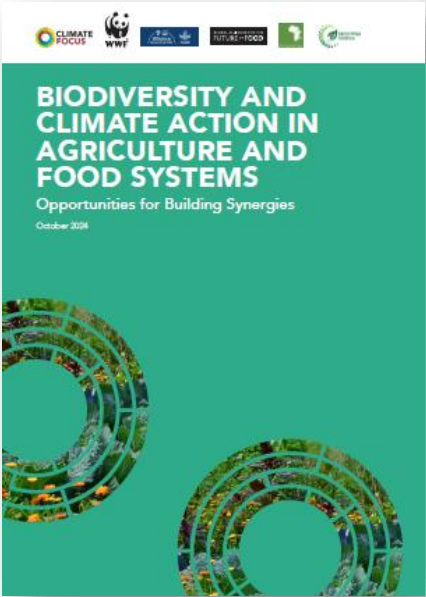
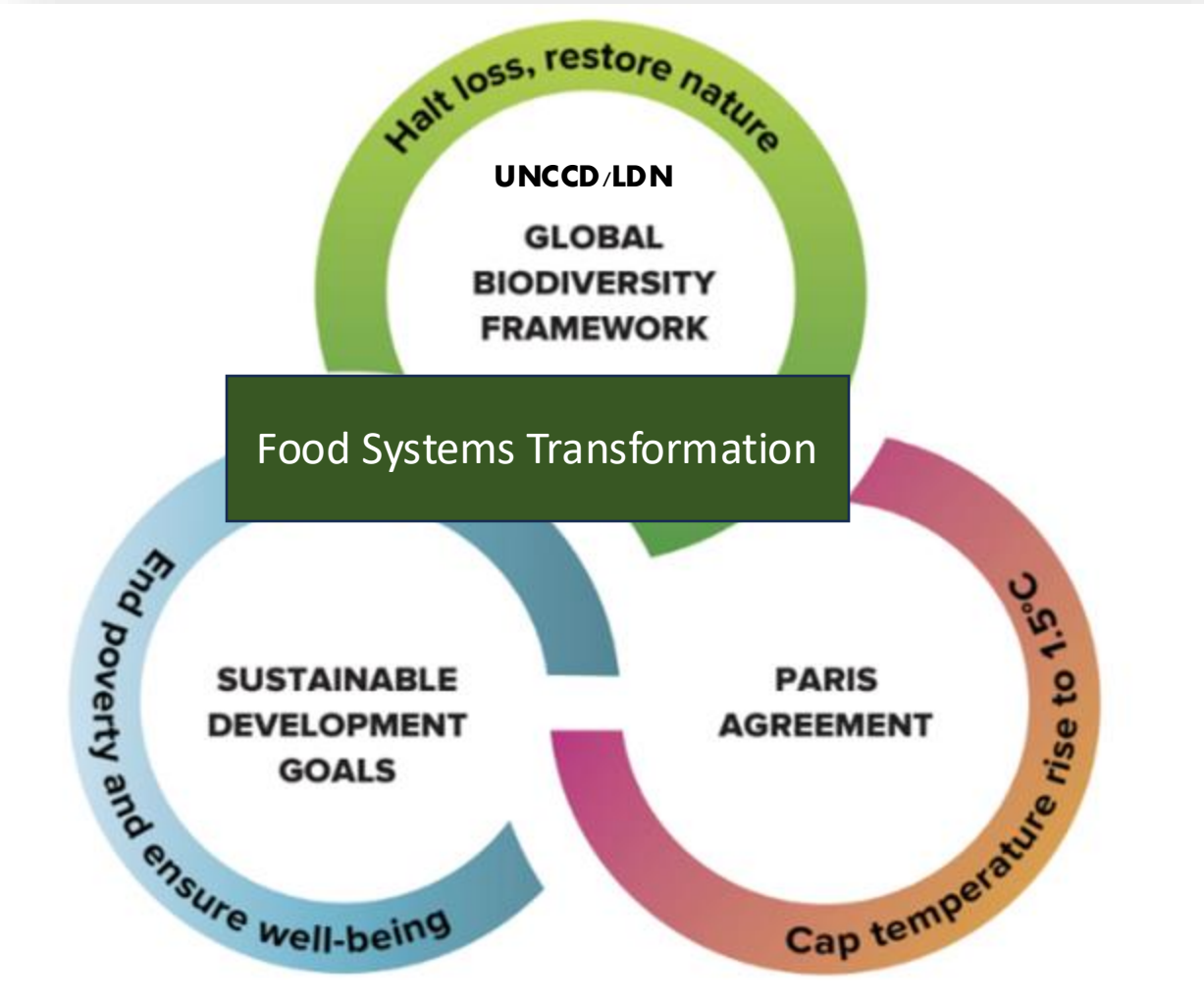


# Aligning international policy processes for climate, land, and biodiversity

International climate, biodiversity and land policy regimes have been developed in parallel under different conventions, with different implementation levels and funding mechanisms at global and national levels.

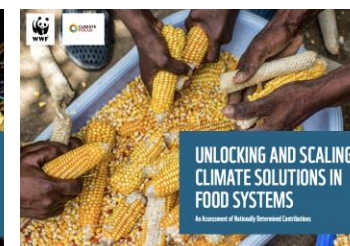
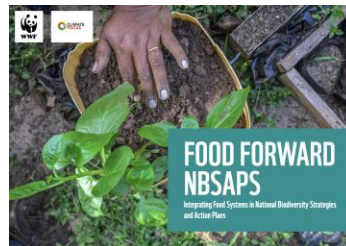
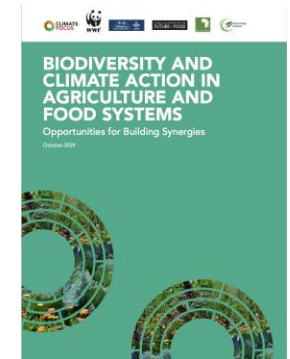
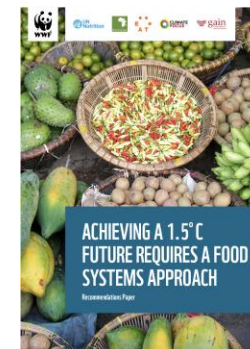
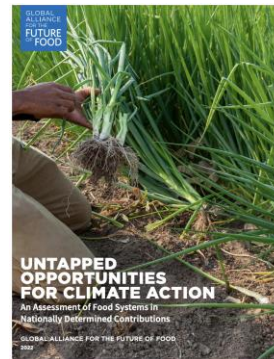
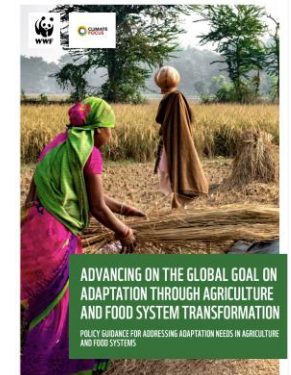
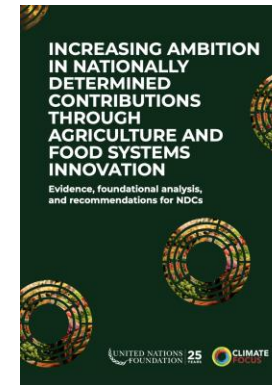
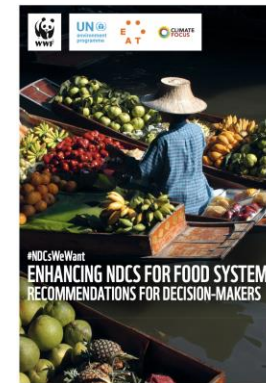
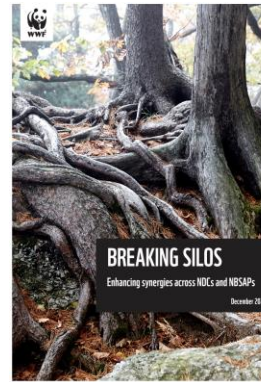
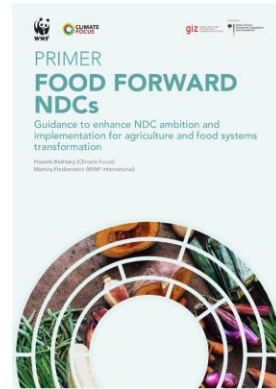


# Nature Positive Agriculture and Food Systems as Cross-Cutting Lever

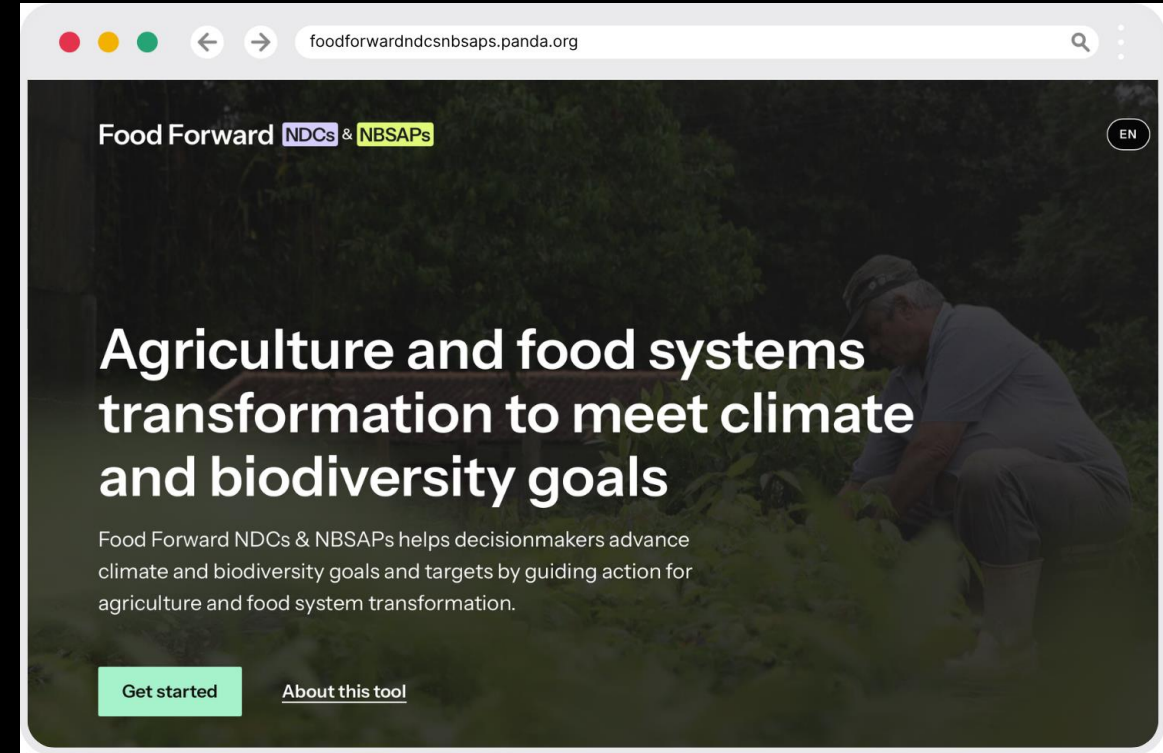
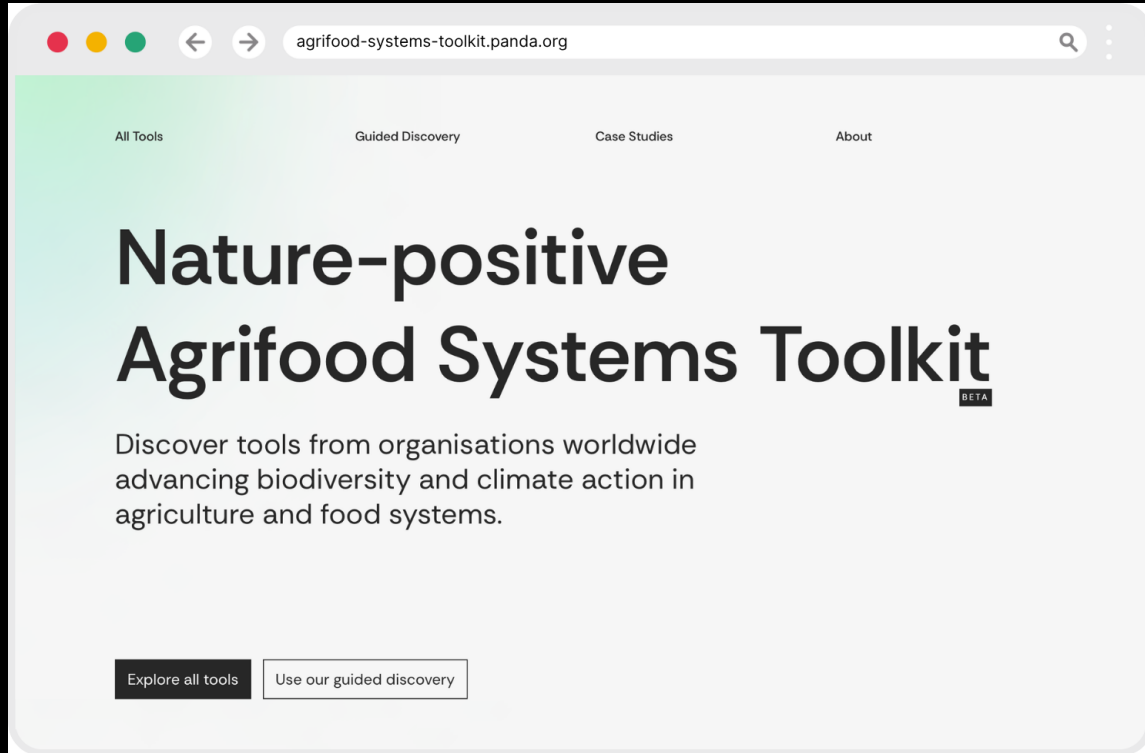


# The Food Forward Initiative

WWF, Climate Focus, and partners support decisionmakers to advance climate and biodiversity action in agriculture and food systems as part of the global climate, biodiversity, and sustainable development agendas.



# Two new tools help advance these synergies.





foodforwardndcsnbsaps.panda.org



EN

# Food Forward **NDCs** & **NBSAPs**



## Food Environment

Interventions that enable a physical, economic, political or socio-cultural change in how stakeholders engage with sustainable food systems.



## Food Governance

Interventions that facilitate equitable, coherent, coordinated and transparent design, implementation and monitoring of food system measures.



## Food Production

Interventions for climate change mitigation and adaptation that help to maintain and restore ecosystems, improve soil and water quality, and that increase availability of healthy food for all.



## Food Supply Chains

Interventions to reduce food loss and waste and to decarbonize supply chain activities in transport, processing and distribution.



## Food Consumption

Interventions to enable preparation and consumption of sustainable, nutritious, and healthy diets.

The updated tool has **37 policy options** across **five intervention areas**.

# Grassland practices



FOOD PRODUCTION

## Implementing improved management practices in grasslands

26 February 2026

### 4 SUSTAINABLE DEVELOPMENT GOALS

- SDG1 NO POVERTY
- SDG2 ZERO HUNGER
- SDG13 CLIMATE ACTION
- SDG15 LIFE ON LAND

### 6 GLOBAL BIODIVERSITY FRAMEWORKS

- GBF1 AREA PLANNING
- GBF2 ECOSYSTEM RESTORATION
- GBF3 30% CONSERVATION
- GBF4 SPECIES PROTECTION
- GBF8 CLIMATE RESILIENCE
- GBF10 AGRICULTURAL BIODIVERSITY

### 5 GLOBAL ADAPTATION TARGETS

- GGAD ECOSYSTEMS
- GGAB FOOD & AGRICULTURE
- GGAE INFRASTRUCTURE
- GGAF LIVELIHOODS
- GGAA WATER & SANITATION

Grasslands can be defined as landscapes with vegetation dominated by grasses, with little or no tree cover. Savannas are a grassland ecosystem. Grasslands and savannas cover about some **26 to 40 per cent of the planet's total land, representing 80 per cent of the world's agricultural area** with managed grasslands used worldwide to support livestock production by grazing. The biodiversity of grassy biomes is often underestimated. Studies show that **tropical grassy biomes can be as species-rich as tropical forests** when considering specific taxa, such as vascular plants, amphibians, birds, and mammals. **Examples of high species diversity** include 89 plant species per square meter identified in a mountain grassland in Argentina and 98 plant species per ten square meters in a semi-dry grassland in Romania.

FOOD PRODUCTION

## Implementing improved management practices in grasslands

Contribution to Global Goals

- 6 GLOBAL BIODIVERSITY FRAMEWORKS
- 5 GLOBAL ADAPTATION TARGETS
- 4 SUSTAINABLE DEVELOPMENT GOALS

Download PDF

Grasslands can be defined as landscapes with vegetation dominated by grasses, with little or no tree cover. Savannas are a grassland ecosystem. Grasslands and savannas cover about some **26 to 40 per cent of the planet's total land, representing 80 per cent of the world's agricultural area** with managed grasslands used worldwide to support livestock production by grazing. The biodiversity of grassy biomes is often underestimated. Studies show that **tropical grassy biomes can be as species-rich as tropical forests** when considering specific taxa, such as vascular plants, amphibians, birds, and mammals. **Examples of high species diversity** include 89 plant species per square meter identified in a mountain grassland in Argentina and 98 plant species per ten square meters in a semi-dry grassland in Romania.

Grasslands also store about **34 percent of global terrestrial carbon**, 90 percent of which accumulates in their soils. Furthermore, the high reflectance of grasslands, known as the **albedo effect**, allows them to reflect sunlight and heat back into the atmosphere, contributing to temperature regulation. Grasslands also play a central role in water retention and can show **great resilience to drought** when well managed. However, if degraded or converted to other land uses, grasslands may cause a detrimental effect on the climate and even become a **net source of greenhouse gas emissions**, since managed grasslands systems emit methane (CH4) from grazing livestock and nitrous oxide (N2O) from soils and animal manure, besides absorbing and releasing CO2.

Currently, grasslands are undergoing land-use conversion and severe degradation (**about 50% of global grassland area has been degraded**), which reduces their capacity to provide ecosystem services – such as climate mitigation and water retention – and impacts the **resilience of grasslands to climate instability**.



Food Forward **INDC 4** **NISAP**

EN POLICY OPTIONS MENU

Contribution to Global Goals

### 6 GLOBAL BIODIVERSITY FRAMEWORKS

- GBF1 AREA PLANNING
- GBF2 ECOSYSTEM RESTORATION
- GBF3 30% CONSERVATION
- GBF4 SPECIES PROTECTION
- GBF8 CLIMATE RESILIENCE
- GBF10 AGRICULTURAL BIODIVERSITY

### 5 GLOBAL ADAPTATION TARGETS

- GGAD ECOSYSTEMS
- GGAB FOOD & AGRICULTURE
- GGAE INFRASTRUCTURE
- GGAF LIVELIHOODS
- GGAA WATER & SANITATION

### 4 SUSTAINABLE DEVELOPMENT GOALS

- SDG1 NO POVERTY
- SDG2 ZERO HUNGER
- SDG13 CLIMATE ACTION
- SDG15 LIFE ON LAND

Download PDF

while directly supporting the UAE Framework for Global Climate Resilience, advancing the Kunming-Montreal Global Biodiversity Framework (KM-GBF), and contributing to the achievement of the Sustainable Development Goals (SDGs).

### Climate change mitigation benefits

Enhanced grassland management can play a key role in mitigating climate change:

- According to FAO, improving management practices on grasslands via incorporation of organic manures, some types of agroforestry practices, and rotational grazing could sequester **0.3 tonnes of carbon per hectare per year** in top soils.
- The **mitigation potential between 2020 and 2050** has been estimated at 0.13-2.56 GtCO2 per year for enhancing soil carbon sequestration in grasslands; 0.03-0.12 GtCO2 per year for reducing conversion of savannas and natural grasslands; and an additional 0.01 GtCO2 per year for reduced emissions from manures on pastures.

### Climate change adaptation benefits

Among the seven key areas of adaptation put forward in the UAE Framework for Global Climate Resilience, implementing improved management practices in grasslands can **directly contribute to**:

- **Target 9a (Water & Sanitation):** Healthy grasslands act as natural sponges, improving water infiltration and storage in soils. This reduces surface runoff, prevents soil erosion, and helps maintain clean water sources by filtering pollutants. Improved grassland management can also protect and regulate watersheds, improving resilience to drought and flooding and ensuring reliable and clean water supplies for both people and wildlife.
- **Target 9b (Food & Agriculture):** Improved grassland management—such as rotational grazing, reseeding native species, and reducing avoiding overgrazing—enhances soil fertility, increases forage availability, and boosts livestock productivity. This leads to more resilient food systems, higher yields, and greater food security for communities.
- **Target 9d (Ecosystems):** Restoring and maintaining healthy grasslands helps conserve biodiversity, protect endangered species, and maintain ecosystem services such as carbon sequestration and pollination. These practices also reduce land degradation and desertification, which are critical for ecosystem-based adaptation to climate change.
- **Target 9e (Infrastructure):** Well-managed grasslands can act as buffers against extreme weather events, by stabilizing soils and protecting roads, bridges, and rural settlements from erosion, landslides, and flooding.

EXPAND ALL

Proven measures to implement

# Guidance for each policy option in Food Forward NDCs and NBSAPs Tool



## Overview



## Concrete measures to implement



## Enabling governance measures



## Tools and guides for implementation



## Synergies

- Climate change mitigation benefits
- Climate change adaptation benefits (contribution to specific GGA Targets)
- Biodiversity benefits (contribution to specific KM-GBF Targets)
- Other sustainable development benefits



## Main implementation challenges, potential negative externalities, and trade-offs



## Measures to minimize challenges and potential negative externalities and trade-offs



## Monitoring tools, indicators and frameworks

- Monitoring biodiversity outcomes
- Monitoring climate outcomes

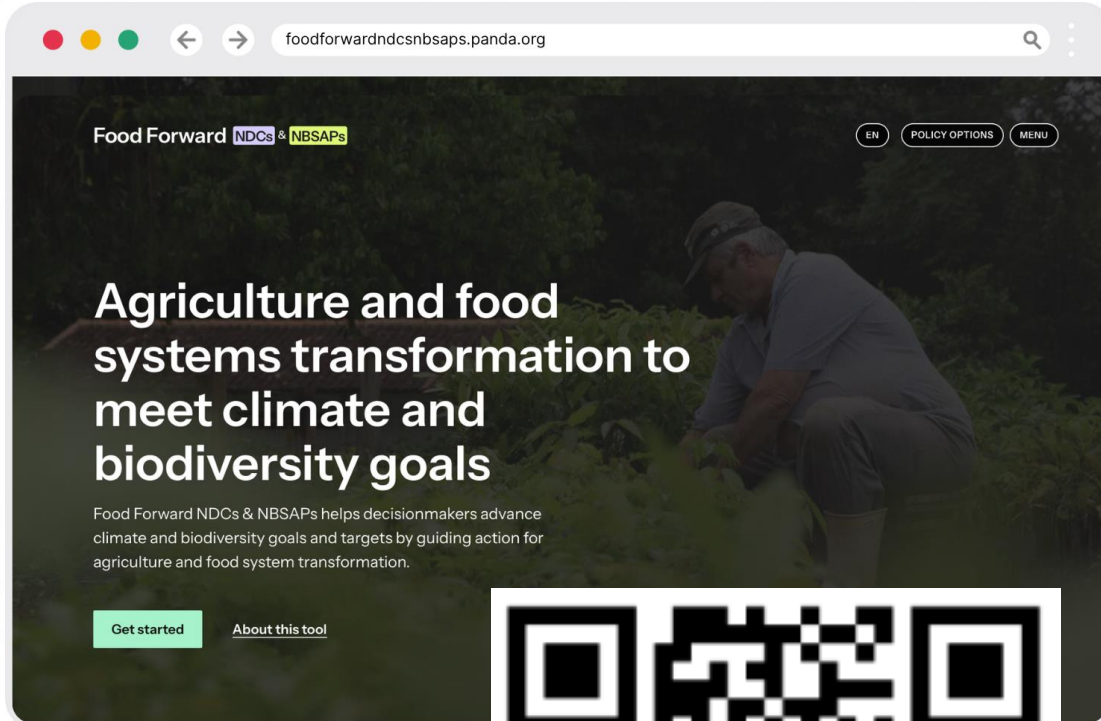


## Implementation costs



## Intervention in practice

<https://foodforwardndcsnbsaps.panda.org/>

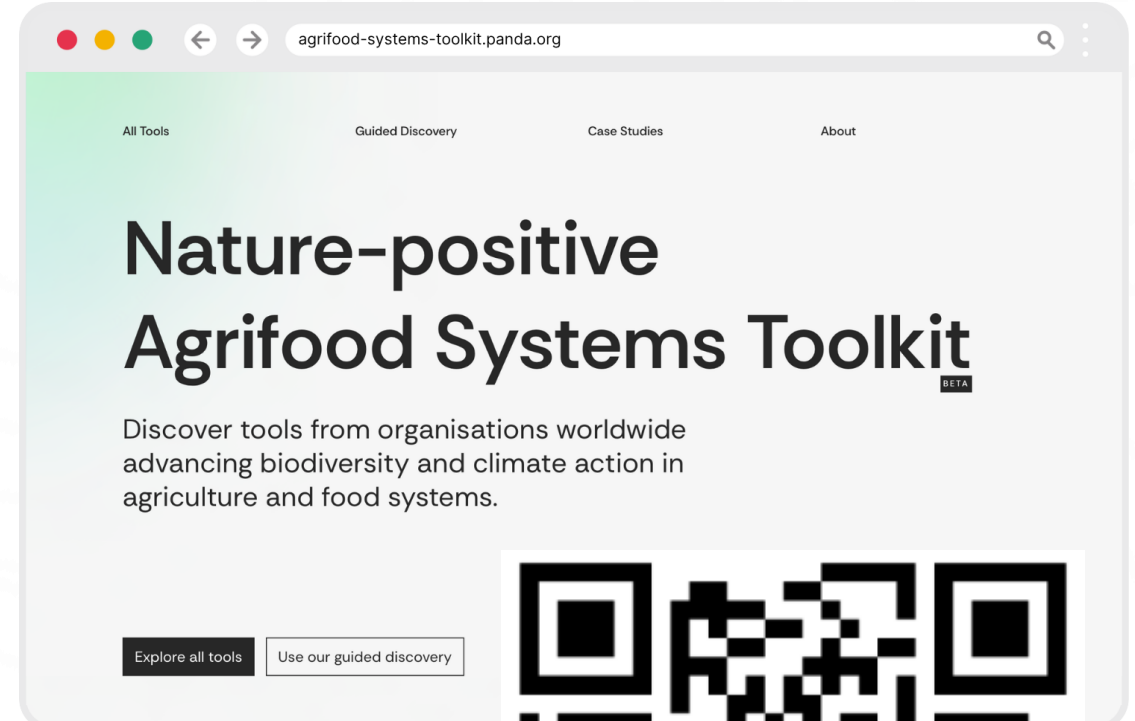


Food Forward NDCs & NBSAPs

# Agriculture and food systems transformation to meet climate and biodiversity goals

Food Forward NDCs & NBSAPs helps decisionmakers advance climate and biodiversity goals and targets by guiding action for agriculture and food system transformation.

[Get started](#) [About this tool](#)



All Tools Guided Discovery Case Studies About

# Nature-positive Agrifood Systems Toolkit BETA

Discover tools from organisations worldwide advancing biodiversity and climate action in agriculture and food systems.

[Explore all tools](#) [Use our guided discovery](#)



**Contact:** Haseeb Bakhtary at [h.bakhtary@climatefocus.com](mailto:h.bakhtary@climatefocus.com) and Martina Fleckenstein at [mfleckenstein@wwfint.org](mailto:mfleckenstein@wwfint.org)

INTERNATIONAL  
**LAND**  
COALITION

# SUPPORTING RANGELANDS & PASTORALISTS

ILC'S PLAN FOR THE INTERNATIONAL YEAR 2026



# ILC IS THE LARGEST AND MOST DIVERSE COALITION WORKING ON LAND RIGHTS IN THE WORLD



## OUR VISION

*A just, equitable and sustainable world.*

## OUR GOAL

*People-centred land governance.*

## OUR MISSION

*Shifting power to the women, men and communities who live on and from the land.*

**BUILDING AND SUSTAINING**

# **DIVERSE PARTNERSHIPS**

**300+** ORGANISATIONS

**500+** PARTNER ORGANISATIONS

**97** COUNTRIES



# ILC'S WORK WITH RANGELANDS AND PASTORALISTS



**26**

**ORGANISATIONS**

*3.5 million people*

**10**

**FOCUS COUNTRIES**

*Asia: Mongolia, Kyrgyzstan, India*

*Africa: Kenya, Tanzania, Uganda,  
Cameroon, Burkina Faso*

*EMENA: Jordan, Montenegro*

**3**

**PLATFORMS**

*Rangelands Initiative Africa*

*Central Asia Pastoralist Alliance*

*South Asia Pastoral Alliance*

# HOW WE WORK

## **NATIONAL LAND COALITIONS**

*work to influence and implement policies through local alliances and grassroots led action*

## **SUPPORTING PEOPLE-GENERATED DATA**

*is used to showcase grassroots needs and capacities*

## **REGIONAL AND GLOBAL ADVOCACY OPPORTUNITIES**

*are leveraged and given space*



# KEY PILLARS FOR IYRP

- I. CIVIL SOCIETY LEADERSHIP  
AND CONSTITUENCY BUILDING**
- II. POLICY ENGAGEMENT**
- III. KNOWLEDGE AND AWARENESS**



# SUPPORTING CONSTITUENCY DEVELOPMENT

- *Ongoing work to give visibility and give voice to pastoralists*
- *Global Coordination Group of the IYRP Global Alliance, Land WG*
- *Regional and global gatherings and dialogues*



# RANGELANDS PLEDGE

- *Inspired by the Forest and Land Tenure Pledge from UNFCCC COP26*
- *Mobilising donors and country governments towards a tenure-led pledge for community driven rangeland restoration*
- *NYCW + COP30 – Peer-to-Peer learning*



# DATA PARTNERSHIPS

## LANDEX

*Indicators to monitor and assess land tenure security for pastoralists*

## LandMark

*Mapping tool to showcase and protect pastoralist territories and values*



# MOBILITY MATTERS

## FRAMING A GLOBAL CAMPAIGN

*Kickoff December 2025*



# CAMPAIGN GOAL

## SECURING MOBILITY AS A RIGHT

CATALYSE A SHIFT IN HOW MOBILITY IS UNDERSTOOD, VALUED AND SUPPORTED - WITH LAND RIGHTS AT THE CENTER AND PASTORALIST VOICES LEADING THE WAY

## DESIRED OUTCOMES

*By the end of 2026, we are looking to see measurable changes:*

- *National level: policy change in countries where we initiated national momentum*
- *Global level: UNCCD COP17 decision supports a specific rangelands pledge*
- *Narrative: Mobility language included in restoration, climate and land dialogues*



# STRATEGIC PILLARS

## HOW WE WILL DRIVE CHANGE

### **NATIONAL MOMENTUM**

*National Land Coalitions and pastoralist organisations identify and influence specific policy windows, national dialogues*

### **GLOBAL LEVERAGE**

*IYRP, UNCCD Caravan and COP17, Rio Conventions*

### **NARRATIVE SHIFT**

*Mobility as a nature-based solution - "climate smart" and peace-promoting, and no longer seen as antiquated, damaging or backwards.*



# IDENTITY AND VOICE

## LED BY PASTORALIST VOICES

- *Women and youth visible protagonists*
- *Messaging built around resilience, restoration, rights - not nostalgia*
- *Positive language and imagery*

## MAKING MOBILITY VISIBLE

*Communications drive political pressure, visibility, and evidence through:*

- *Storytelling (champion interviews, videos, photo essays)*
- *Policy briefs, knowledge products and evidence timed to key events*
- *Social media waves around campaign milestones*
- *UNCCD Caravan linking local realities to global decisions with media coverage*



# MILESTONES AND ENGAGEMENT

## 2026: A YEAR OF CONVERGENCE

### LAUNCH (DEC 2025)

*FAO IYRP event, exhibition and screening event,  
website launch with champions and list of events*

### EARLY-MID 2026

*National dialogues and advocacy - with 1 country  
kickoff first quarter, youth/women gatherings*

### JUNE-AUG 2026

*UNCCD Caravan, media packages and visibility, global  
pastoralist gathering, UNCCD COP17, declarations*

### LATE 2026

*UNCBD COP17, World Soil Day, campaign report-back*



**THANK YOU**

# Resources & Recording

## Resources & Recording

 **Further resources & recording** emailed through IUCN Engage

 Visit [engage.iucn.org](https://engage.iucn.org) to stay updated

## Contact Information

 [Leonie.meier@wwf.de](mailto:Leonie.meier@wwf.de)



Supported by:



With funding from the



based on a decision of  
the German Bundestag